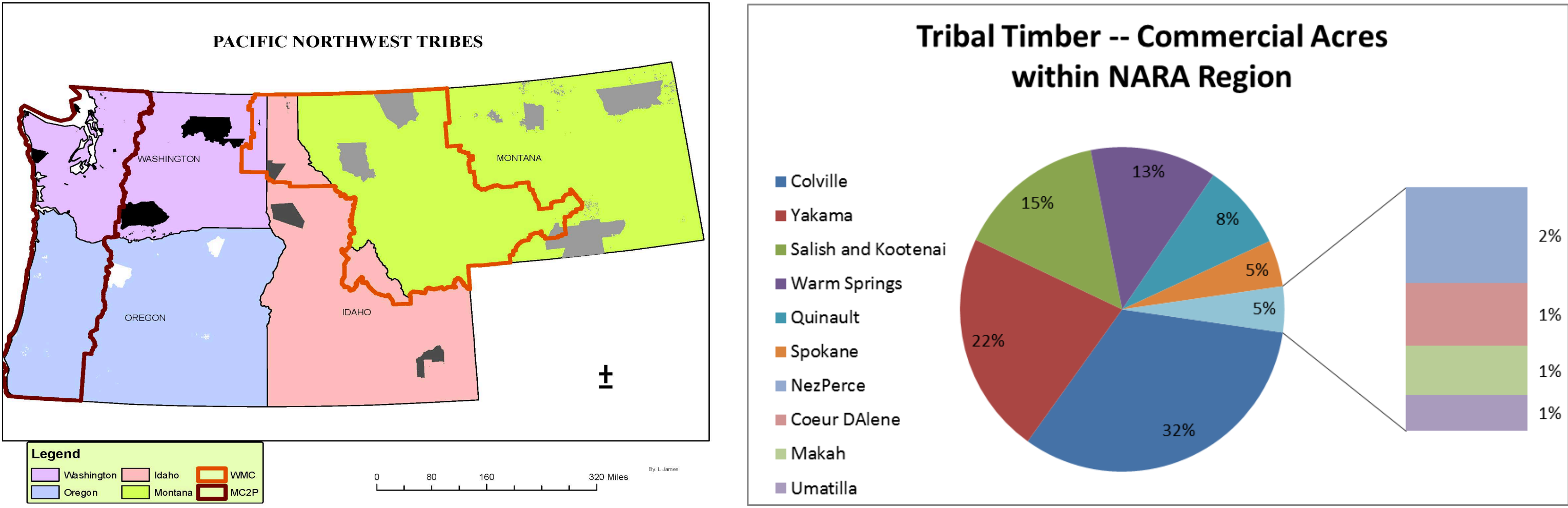


NARA Regions & Tribal Communities



Tribes account for approximately 2 Million, commercial forest acres within the in the Pacific Northwest NARA region. The largest of the tribal landowners are the: 1) the Confederated Tribes of the Colville Reservation, 2) Yakama Nation, 3) Confederated Salish & Kootenai Tribes, 4) the Confederated Tribes of the Warm Springs Reservation and 5) the Quinault Indian Nation.

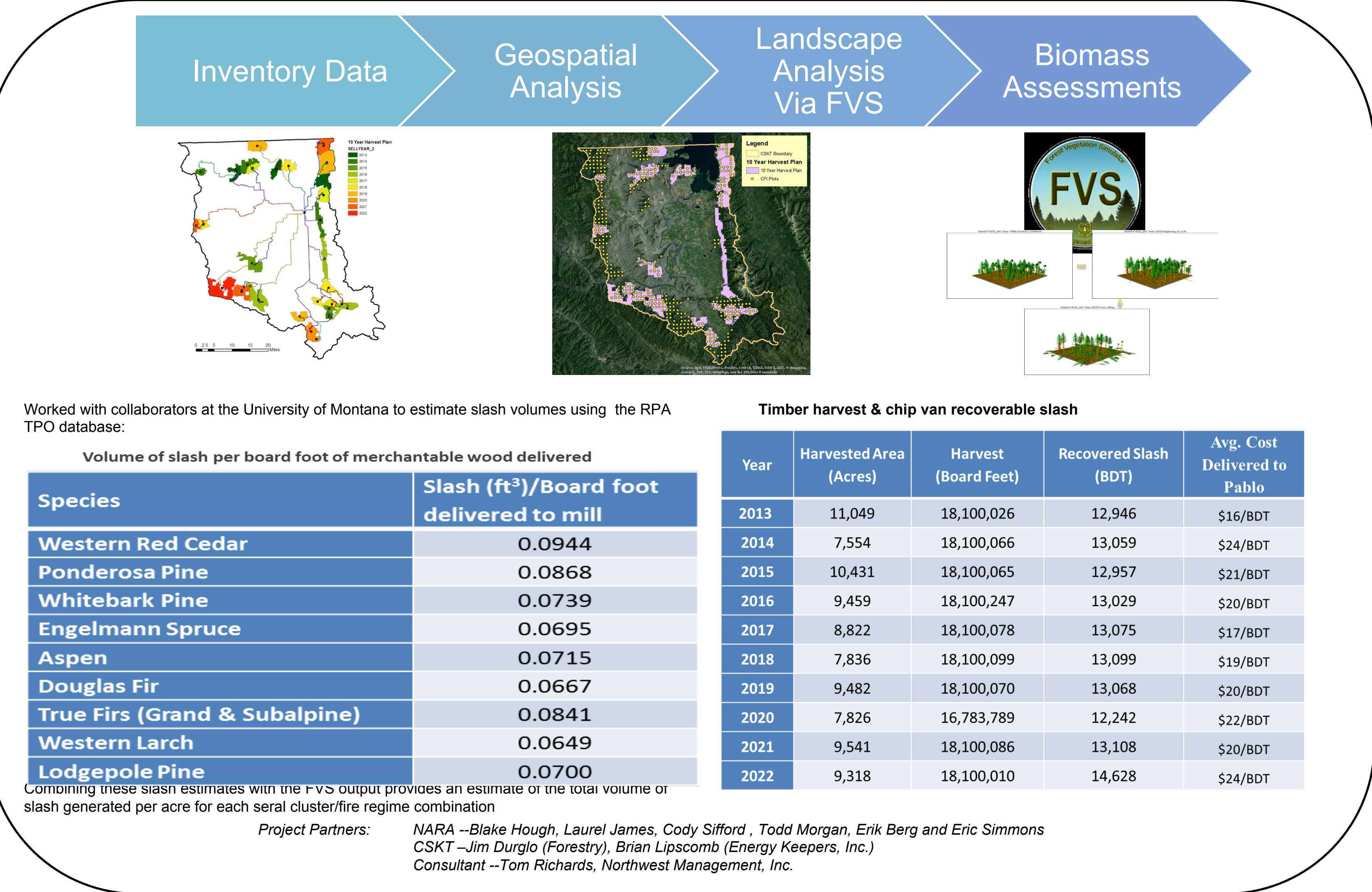
Objectives

In general the NARA focus is to enable a new and technically complex industry in the Pacific Northwest by increasing energy literacy to ensure a sustainable biofuels industry into the future. The measures of success include:

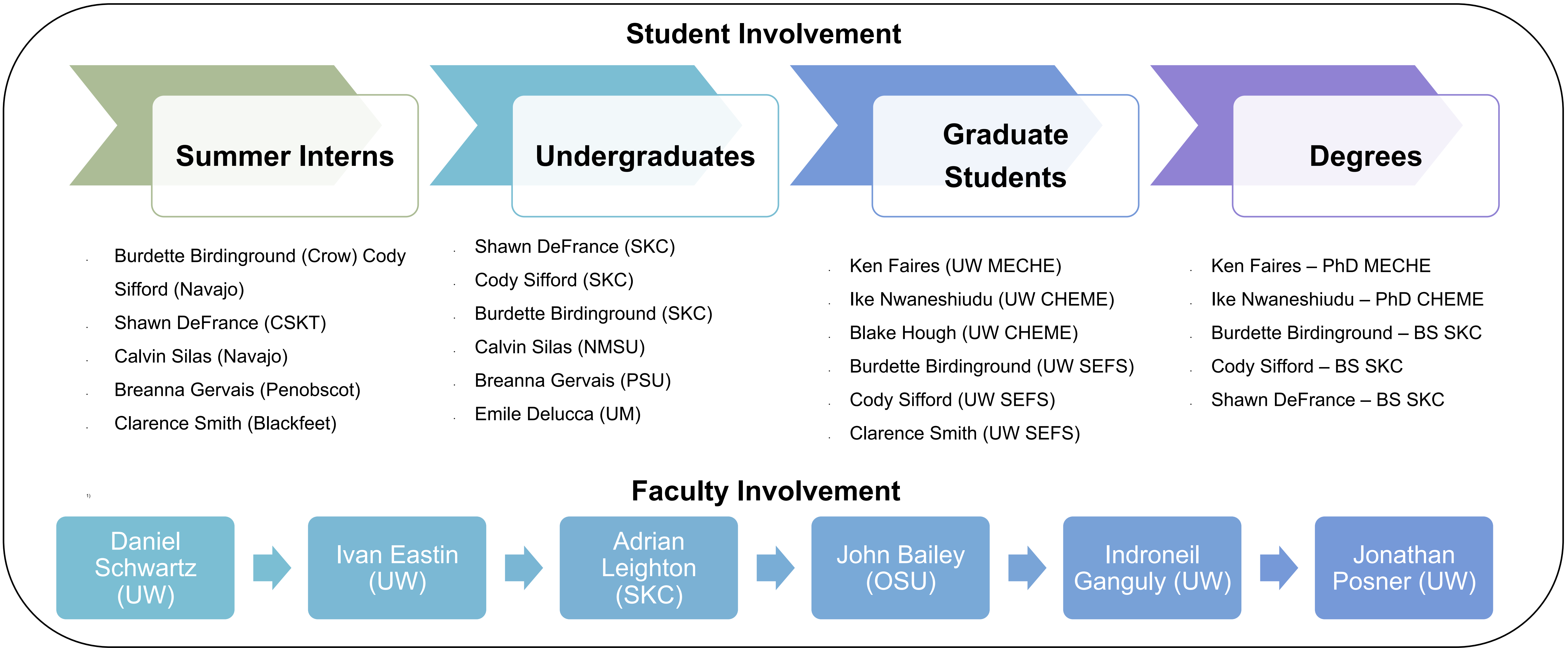
- **Educating and training our future energy workforce**
- **Providing information and resources to stakeholders and professionals in industries that play a role in the biofuels supply chain.**
- **Engaging the public to participate in the decision making process.**

The Tribal Partnership Projects section of this NARA grant shares these goals and we aim to focus our efforts on tribal governments and their tribal communities; while we create opportunities for tribal student participation.

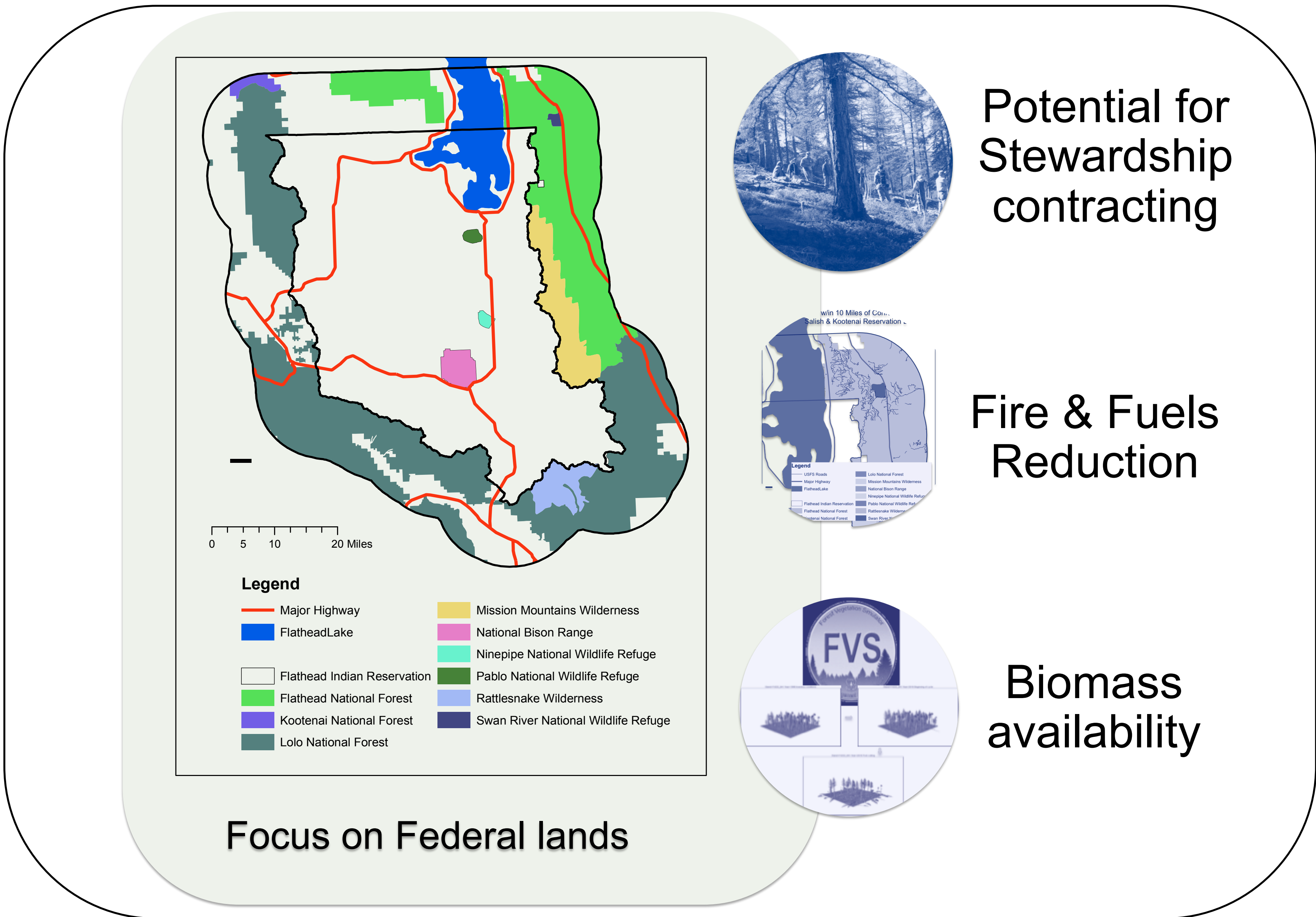
Project 1: Confederated Salish and Kootenai Tribes



NARA Education: Tribal Students and Graduate Education



Project 2: Federal Lands adjacent to Tribal Lands



Project 3: Federal Resources Adjacent to Tribal Lands

